



**Omnia
Technologies**
Enabling Evolution

The new global partner for the Food & Beverage Industry



CONFIDENTIAL AND PROPRIETARY
Any use of this material without specific permission
of Omnia Technologies is strictly prohibited

One stop shop: from processing to packaging



ACMI is now able **to supply turn-key solutions** thanks to the integration of Sacmi Beverage technologies into ACMI that has led to the establishment of two new Business Units: **ACMI Blowing & Filling** and **ACMI Labelling Solutions**.

Furthermore, being **part of Omnia Technologies Group** means that we are now able to supply complete solutions to the beverage industry, from processing to packaging thanks to the **Group's processing expertise** (TMCI, Della Toffola, SAP Italia and Blendtec).

This allows the customer to rely on a **single partner** for every stage of production.

The strength of the Group

OMNIA TECHNOLOGIES NUMBERS

Omnia Technologies is a global leader in designing and manufacturing innovative and sustainable solutions in the food, beverage and pharma world.



+30 Production facilities



24 Sales & Service Offices



2,500+ People



80% Export



400+ R&D staff and engineers



~700 M€ Turnover

ACMI NUMBERS

ACMI is an Italian manufacturer of high technology and high flexibility bottling and packaging lines.



8 Production facilities



930+ People



80% Export



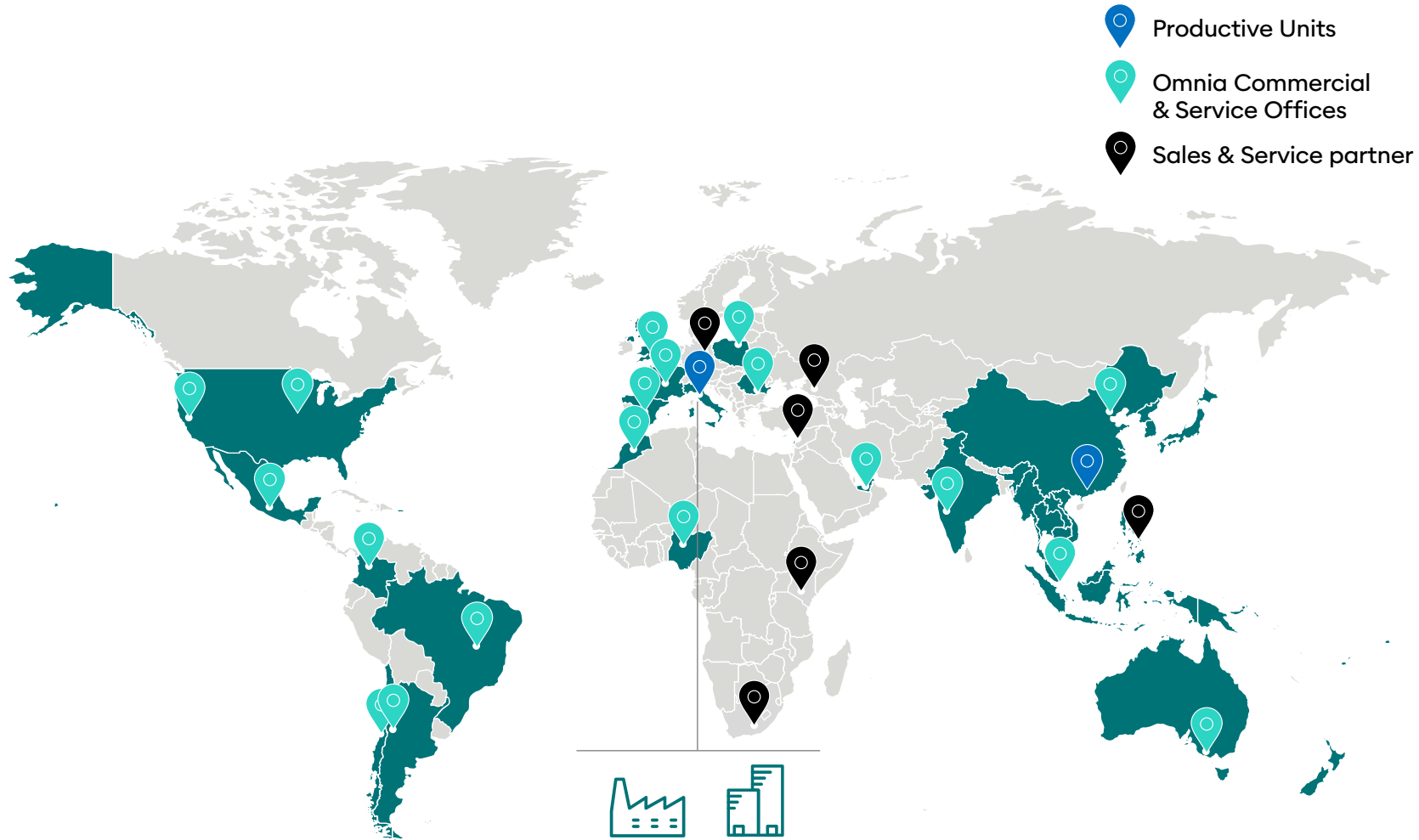
100+ R&D staff and engineers



~300 M€ Turnover



Closer to the customer

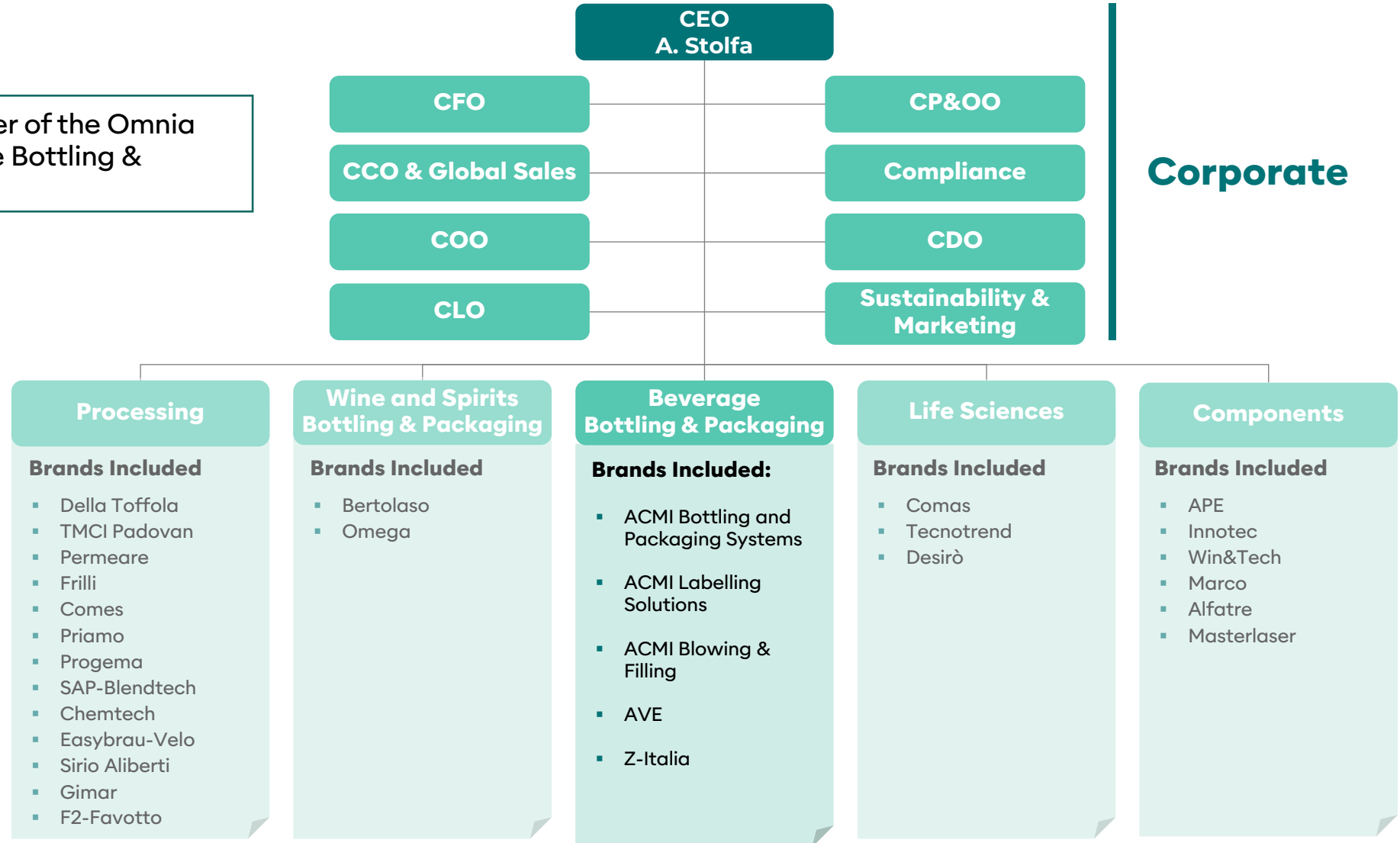


The merging of the **Sacmi Beverage**, **ACMI** and **Omnia Technologies** service networks now allows Super ACMI to serve the key geographical areas:

- **Closeness to customers** is ensured by a team and consolidated network of local partners
- **Integrated engineering processes** and tools are shared across all company platforms
- **Remote customer assistance** via IoT diagnostic devices

Omnia Technologies Organization set-up

ACMI is the brand leader of the Omnia Technologies' Beverage Bottling & Packaging Division.



ACMI – Market positioning

We design and manufacture machines and complete lines, based on the specific needs of each individual customer, sector and market.

| | | | | |
|--------------------------------|------------------------------|-----------------------------------|----------------------|----------|
| STILL & CARBONATED WATER | CARBONATED SOFT DRINKS | OTHER STILL DRINKS & JUICES | WINE & SPIRITS | BEER |
| EDIBLE OILS | MILK | SAUCES, CREAMS, JAMS, HONEY | YOGURT & DIARY | PET-FOOD |

ACMI – Lines type

Our forty years of experience in the field of line engineering allows us to offer to the market innovative and high-performance solutions.

| | | | | |
|-----------|-------------------------------|--------------------|--------------|--------------|
| PET LINES | OWG GLASS LINES | RGB GLASS LINES | CAN LINES | RefPET LINES |
| REPACKING | LARGE FORMAT (5 GAL, KEGS) | JAR LINES | PLASTIC CUPS | BAG-IN-BOX |

Blowing & Filling

STRETCH-BLOW MOLDING MACHINES

- SMARTBLO STD (UP TO 3 LITRES)
- SMARTBLO XL (3 TO 12 LITRES)

FILLING AND CAPPING MACHINES

- EQUAFILL AWF E AWS FOR STILL PRODUCTS
- EQUAFILL ESF FOR CARBONATED PRODUCTS

STRETCH-BLOW/FILLING BLOKS

- BLO2FILL STD FOR STILL AND CARBONATED PRODUCTS
- BLO2FILL XL FOR STILL PRODUCTS

STRETCH-BLOW/LABELLING/ FILLING TRI-BLOKS

- BLOD3COFILL

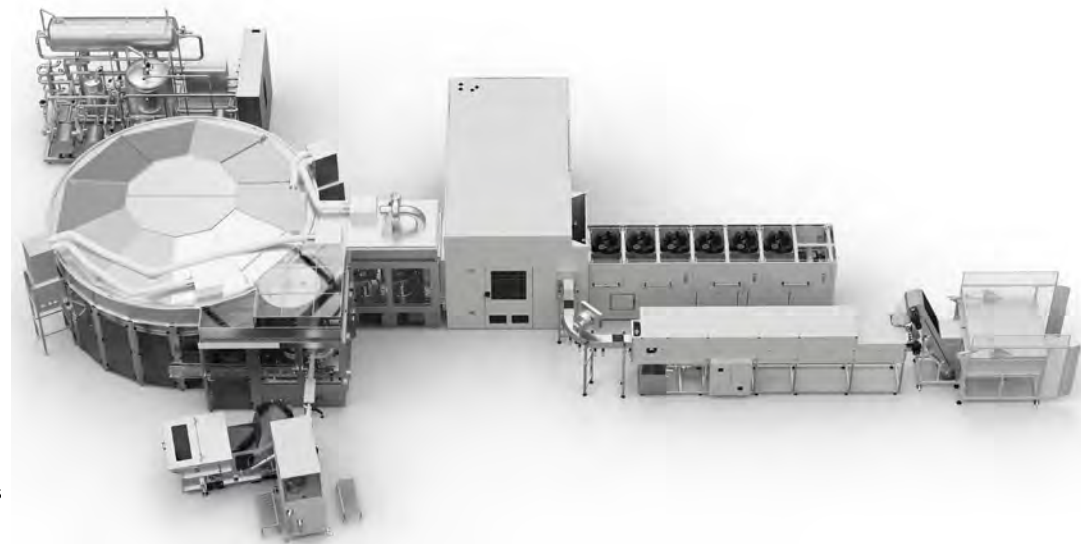
CIP

PREFORM AND CAPS FEEDER

MIXER UNITS

FORM FILL SEAL (FFS)

- HYGIENIC
- EXTENDEND SHELF LIFE
- FULL ASEPTIC CONFIGURATION
- IN-MOLD LABELLING



Blow moulding, Filling and FFS

Technological capabilities:

PET

- **Up to 60,000 bph** (nominal speed at the filler) with 20 Oz Coke
- **Up to 81,000 bph** with 0,60 Lt. still water
- Full electronic capping
- Double cavity concept



CANS & ALU BOTTLES

- **Up to 90,000 cph** (nominal speed at the filler)
- ALU bottle capability with strong market references



GLASS

- **Up to 60,000 bph** OWG and RG bottles
- Maximum Flexibility: PET/OWG/ALU, CSD+HF

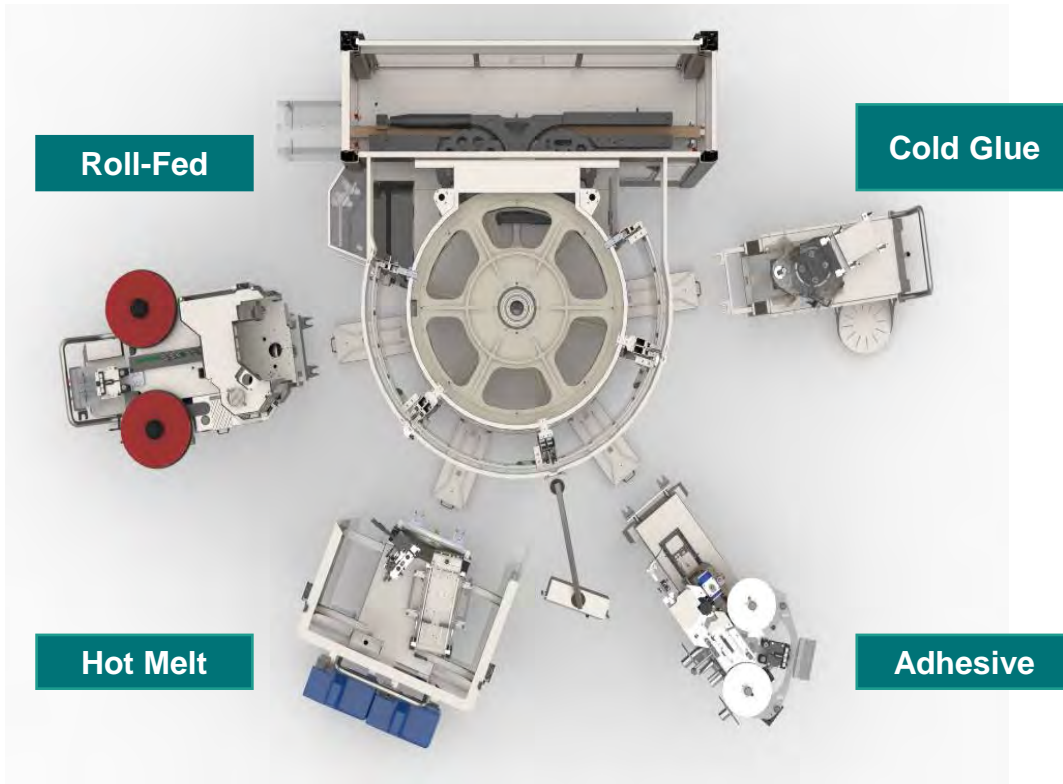


PLASTIC CUPS

- **Up to 100,000 cph**, 5 to 500 ml cup sizes
- ESL and full aseptic capability



Labelling



| Module | Maximum Speed |
|-----------|---------------|
| Roll-Fed | 81,000 cph |
| Cold Glue | 72,000 cph |
| Adhesive | 66,000 cph |
| Hot Melt | 60,000 cph |

Accuracy and Efficiency (98%)

- Accurate positioning for oriented bottles
- Settings set –up via HMI – **Easy to Use**
- High labelling quality
- Servo motor quick release
- High mechanical efficiency
- Zero backlash
- **SMED**

Flexibility

Full servo driven bottle plates allow the customization of the bottle orientation according to :

- Label dimensions
- Number of labelling stations
- Labelling technology
- Installed optional devices (coding, optical orientation, quality control ..)

Bag-in-box

STAND ALONE FILLERS

- **Linear S** – automatic with **manual** bags separation
- **Linear V** – automatic with **automatic** bag separation
- **Linear** – automatic with in-line bag process
- **Lateral** – automatic with 90° angle bag process

MONOBLOCK

- **Mono-block linear** – with in-line bag process
- **Mono-block lateral** – with 90° angle bag process



Formats available

Minimum 1,5 liter

Maximum 20 liters

Production speed

Maximum 820 bph for 1,5 l

Maximum 410 bph for 20 l

| | |
|----------------------------|--------------|
| Filling accuracy | σ 0,3 |
| Efficiency 2 Filler system | 97 % |
| Efficiency 3 Filler system | 96 % |

Line engineering – End-of-lines

Our product range is one of the most comprehensive on the market and includes:

HIGH & LOW INFEED **DEPALLETISERS**

PALLETISERS UPTO 610 LAYERS/HR (WITH **TWISTERBOX**)

CONVEYING SYSTEMS - AUTOMATIC CHANGEOVER

UPTO 160 PALLETS/HR **PALLET STRETCHWRAPPERS**

REFPET APPLICATIONS **CRATERS/DECRATERS**

CARTONING ROBOTS

MULTIFUNCTION ROBOTS

SHRINK WRAPPERS UPTO 120 PACKS/Min 1-3 LANES

HIGH SPEED CONTINUOUS **TRAYFORMERS**

WRAP-AROUNDS

MACHINES FOR MULTIPACK (DUOPACK)

ELECTRONIC **HANDLE APPLICATORS** 1-3 LANES

HIGH SPEED **END LOAD CARTONERS**

LAYER FORMATION SYSTEMS (V° GENERATION)

GOGREEN MACHINES - NO PLASTIC

COMPLETE **REPACKING LINES**

LINE SUPERVISION

COMPLETE **END-OF-LINES** WITH CUTTING EDGE TECHNOLOGY

Line engineering – End-of-lines

Line engineering capabilities:

PET

- **Upto 44,000** bph (nominal speed at the filler) with 2 Lt. square bottle.
- **Upto 81,000** bph with 0,25 Lt.
- **Upto 15 formats** with one line.

CANS

- **Upto 120,000** cph (nominal speed at the filler)
- Sleek
- Slim
- **2x2 keel clip**

GLASS

- OWG
- RGB
- **Hybrid: PET/OWG**

RefPET & REPACKING

- RefPET **upto 51,000** bph 2,5 Lt. (2x8)
- Repacking for PET bottles or cans

Main advantages

The **integration** of Sacmi Beverage and Labelling technologies into **ACMI**, promoted by Omnia Technologies, has established a global player with **100% Made in Italy technology** based in Parma – an area and a brand renowned worldwide for its food & beverage technologies.

What does this mean for you?

- **A one-stop partner, from process to end-of-line** – thanks to Group synergies
- The outstanding **reputation** of the **ACMI brand**
- **Cutting-edge technology** (recognized by all major international brands)
- **Flexibility** and **tailor-made** solutions
- Experience with **complex projects** (line engineering) with global references
- Sales and service **platforms** located worldwide
- High **customer service** standards
- **Sustainable solutions** – energy savings and environmental impact of materials



Omnia Technologies' values

01.

Technology

Innovation

With a team of more than 400 highly experienced engineers, we design and develop the most advanced automation technologies focusing on reliability and sustainability



02.

Sustainability

Respect

We are committed to sustainability – we respect our people and our environment, and we value the heritage of the local communities where we operate which we aim to develop and preserve



03.

Service

Accessibility

We are committed to deliver and support our customers with a team of engineers mobilized worldwide.



Omnia Technologies' ESG plan

Inspired by our Italian **heritage** and our vocation for **sustainability**, we serve as technology leaders in the food, beverage and pharma industry, always at service of our customers, people and communities.

Corporate



Becoming an Industry benchmark for ethics and Integrity



Promote a culture of transparency and involvement toward all stakeholders



Become the trusted advisor in the reference market



Adopt a risk management approach



Obtain B-CORP certification

People



Implementing a safety culture based on the zero-accident mindset



Creating a work environment oriented towards people's well-being



Create an organization based on the values of Gender equity & Diversity



Invest in the personal and professional growth of all employees



Become active players in the territory



Become a highly attractive company to new talents

Impacts reduction



Aspiring Group Net Zero Emission by 2030



Building a green and circular energy model



Develop a circular materials management model



Minimise water consumption



Implement an Environmental Management System



Make working environments ecofriendly

Innovation



Orient all development product to generate benefits of sustainability



Offer our customers a complete and innovative service with integrated and smart products



Revisiting product offerings in key of servitization

Thank you

This presentation is property of Omnia Technologies and is strictly confidential. It contains information intended only for the person to whom it is transmitted. The information contained in this presentation is provided solely for informational purpose. With receipt of this information, recipient acknowledges and agrees that: (i) this document is not intended to be distributed, and if distributed inadvertently, will be returned to Omnia Technologies as soon as possible; (ii) the recipient will not copy, fax, reproduce, divulge, or distribute this confidential information, in whole or in part, without the express written consent of the Omnia Technologies ; (iii) all of the information herein will be treated as confidential material with no less care than that afforded to its own confidential material.



**Omnia
Technologies**
Enabling Evolution

www.acmispa.com